



Ontario CCA Partnership Initiatives

Susan Fitzgerald

Presentation at ICCA Meeting

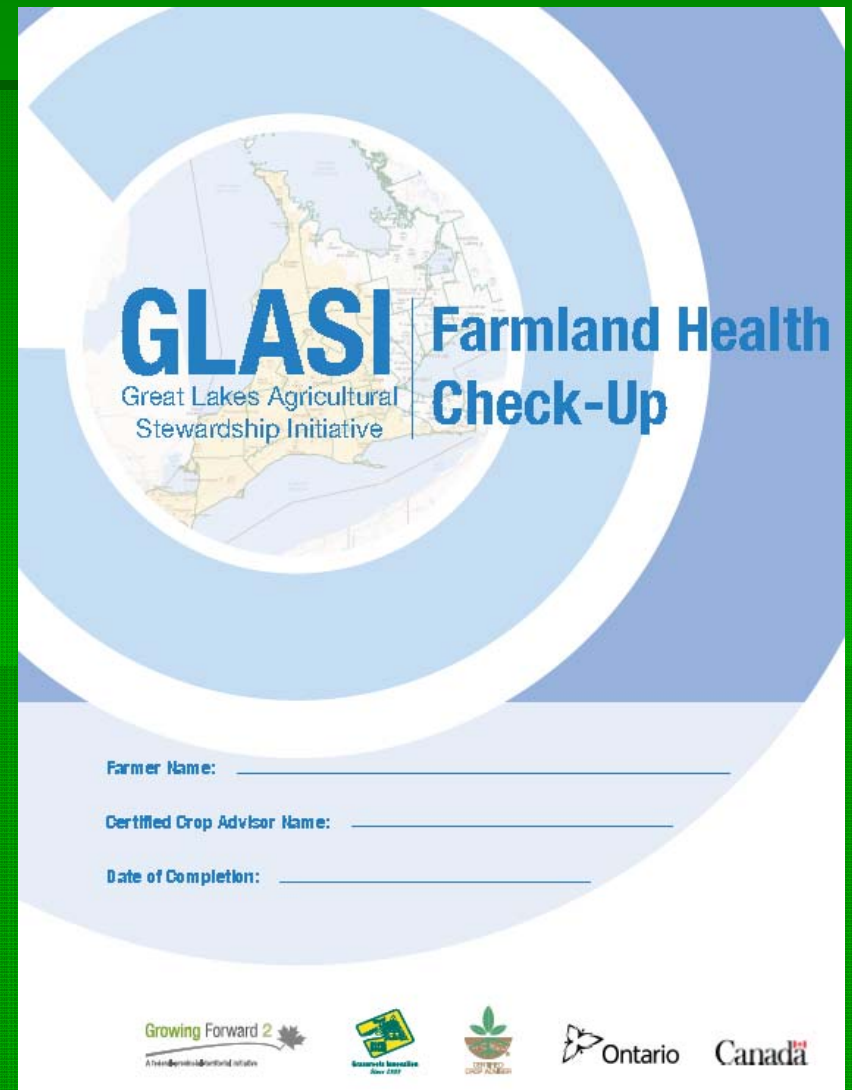
September 15, 2015

Three Examples

- Great Lakes Agriculture Stewardship Initiative (GLASI) – OMAFRA and OSCIA
- CCA 4R Specialty – Canadian Fertilizer Institute
- New Requirements for Neonicotinoid Treated Seed - MOECC

GLASI – Great Lakes Agriculture Stewardship Initiative

- Partnership with Ontario Ministry of Agriculture, Food and Rural Affairs and Ontario Soil and Crop Improvement Association



The image shows a form titled "GLASI Farmland Health Check-Up". The form features a large circular graphic in the background containing a map of the Great Lakes region. The text "GLASI" is prominently displayed in large blue letters, with "Great Lakes Agricultural Stewardship Initiative" written below it in smaller text. To the right of the map, the words "Farmland Health Check-Up" are written in a bold, blue font. Below the graphic, there are three lines for text entry, each preceded by a label: "Farmer Name:", "Certified Crop Advisor Name:", and "Date of Completion:". At the bottom of the form, there are five logos: "Growing Forward 2" with a leaf icon, "Ontario Soil and Crop Improvement Association" with a leaf icon, "Ontario" with a leaf icon, and "Canada" with a leaf icon.

GLASI Farmland Health
Great Lakes Agricultural Stewardship Initiative | **Check-Up**

Farmer Name: _____

Certified Crop Advisor Name: _____

Date of Completion: _____

Growing Forward 2
Awards for Excellence

Ontario Soil and Crop Improvement Association

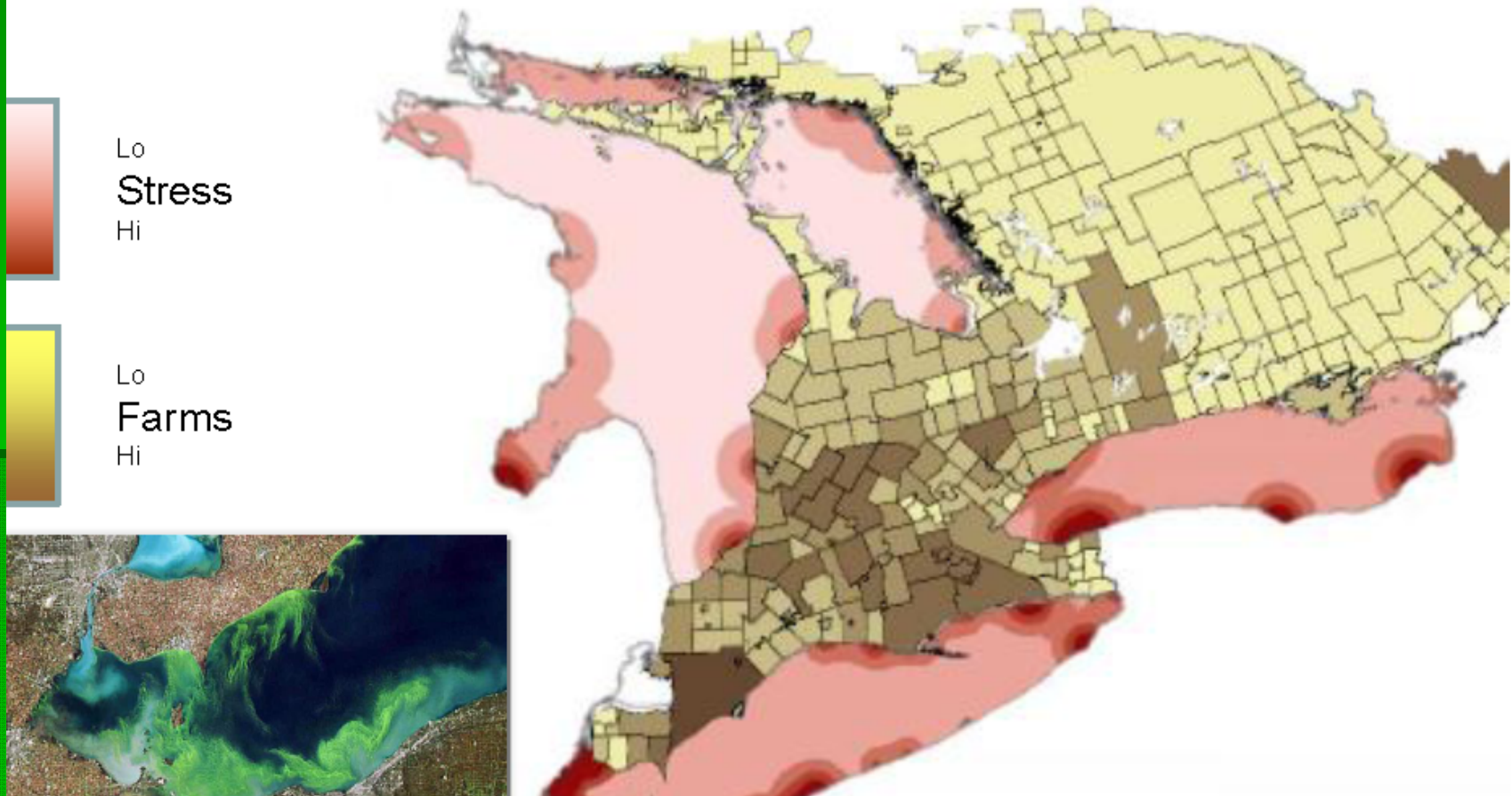
Ontario Canada

Background Context

- Ministry's commitments with respect to government priorities
- Challenges facing the agri-food sector with respect to the Great Lakes
- Exploring opportunities to work with partners to broaden outreach, build support and interest from the farm community

Background continued...

Phosphorus and Agricultural Production





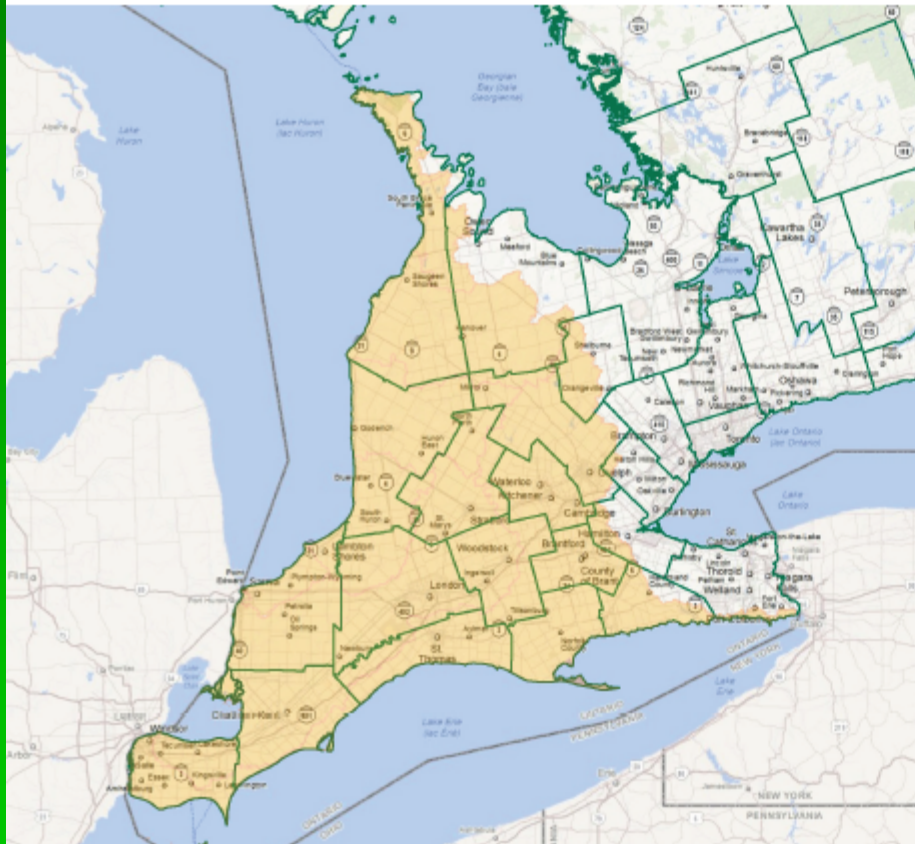
GLASI

Great Lakes Agricultural
Stewardship Initiative

**Farmland Health
Check-Up**

Review the health and productivity of your farm

Work with a Certified Crop Advisor



Discuss the specifics of your farm:

- Soil and Slope
- Organic Matter
- Tillage Erosion
- Compaction
- Crop Rotation
- Drainage and Infiltration
- Emergence and Growth
- Pollinator Habitat
- Manure and/or Biosolids Use
- Cover Crops

**Free assessments are available to farm businesses
In the Lake Erie watershed and the Lake Huron Southeast Shores watershed**

**Work with a Certified Crop Advisor
to discuss soil health on your farm**



GLASI
Great Lakes Agricultural
Stewardship Initiative

**Farmland Health
Check-Up**

**Coupon for a
Free Check-Up
(\$300 value)**

Available for farm businesses in the Lake Erie and Lake St. Clair watersheds and/or the Lake Huron southeast shores watershed

Cost-share funding may be available to implement Best Management Practices identified by a Certified Crop Advisor (CCA)

Ask your CCA about the Check-Up. For more information, visit ontario.soilcrop.org or email GLASI@ontario.soilcrop.org

Valid as annual budgets allow: May 2015 – January 2018

ONE
FREE Farmland
Health Check-Up

In partnership with Ontario's
Certified Crop Advisors



Ad in Ontario Farmer Newspaper

GLASI | Farmland Health Check-Up
Great Lakes Agricultural Stewardship Initiative

Clip this coupon!

Work with a Certified Crop Advisor!



Free assessments are available to farm businesses
in the Lake Erie and Lake St. Clair watersheds and/or the Lake Huron southeast shores watershed

ONE FREE Farmland Health Check-Up

In partnership with Ontario's Certified Crop Advisors

Ontario's Certified Crop Advisor

Note: see www.ontariosoilcrop.org for applicable terms and conditions

 Ontario

Contact us for more information

Phone: 226-706-8669
Email: GLASI@ontariosoilcrop.org
Web: www.ontariosoilcrop.org



Benefits

- Producer earns access to cost-share to implement selected BMPs identified in the check-up
- CCA designation gets profile on program material
- Added value for designation as farmers must work with a CCA
- CCAs add value to growers through cost-share funding and more discussion on agronomics

PROPOSED 4R SPECIALTY PROGRAM SUPPORTED BY THE FERTILIZER CANADA



Role for CFI

- CFI will subsidize the cost of developing a 4R Nutrient Stewardship Guide (print version) – joint credit to CCA and CFI.
- Video vignettes on their GrowZone website will be assessed against P.O.s and additional material added as required.
- CFI will produce additional 4R related, on-line learning opportunities with CEUs available.

Role for CFI continued...

- In order to encourage quick update, CFI will provide funds to subsidize the entire or partial exam registration fee for up to 50 CCAs.
- We would add a question to the exam registration form asking CCAs the number of acres on which they consult.

Proposed Timing

- Target: Initial 4R Specialty exam in August 2016
- News release in late November to coincide with Fall CCA newsletter
- Announce exam subsidization at CCA conference in January
- P.O.s revised by February 2016
- Exam questions and study material ready by May 2016



NEW REQUIREMENTS FOR TREATED SEED - REGULATORY AMENDMENTS UNDER THE PESTICIDES ACT

Ministry of the Environment and Climate
Change



New Regulatory Requirements

- Created a new class of pesticides for corn and soybean seeds treated with the following neonicotinoid insecticides:
 - imidacloprid
 - thiamethoxam
 - clothianidin

Impact on Farmers

- August 2015 – more than 50% of corn and soybean acreage
- After August 2016 – any amount of neonic treated seed
- Farmers must:
 - Complete an IPM course
 - Submit a pest assessment report
 - Sign a declaration stating they considered IPM principles

Who can do soil pest assessments?

- Until August 2016, farmer can do own
- Starting August 31, 2016 farmer can do own if they took IPM training
- As of August 31, 2017 phasing in across Ontario farmer **must** use a “professional” pest advisor
- Crop damage pest assessments must always be done by “professional” pest advisor

CCAs Named In Legislation

“professional pest advisor” means one of the following persons:

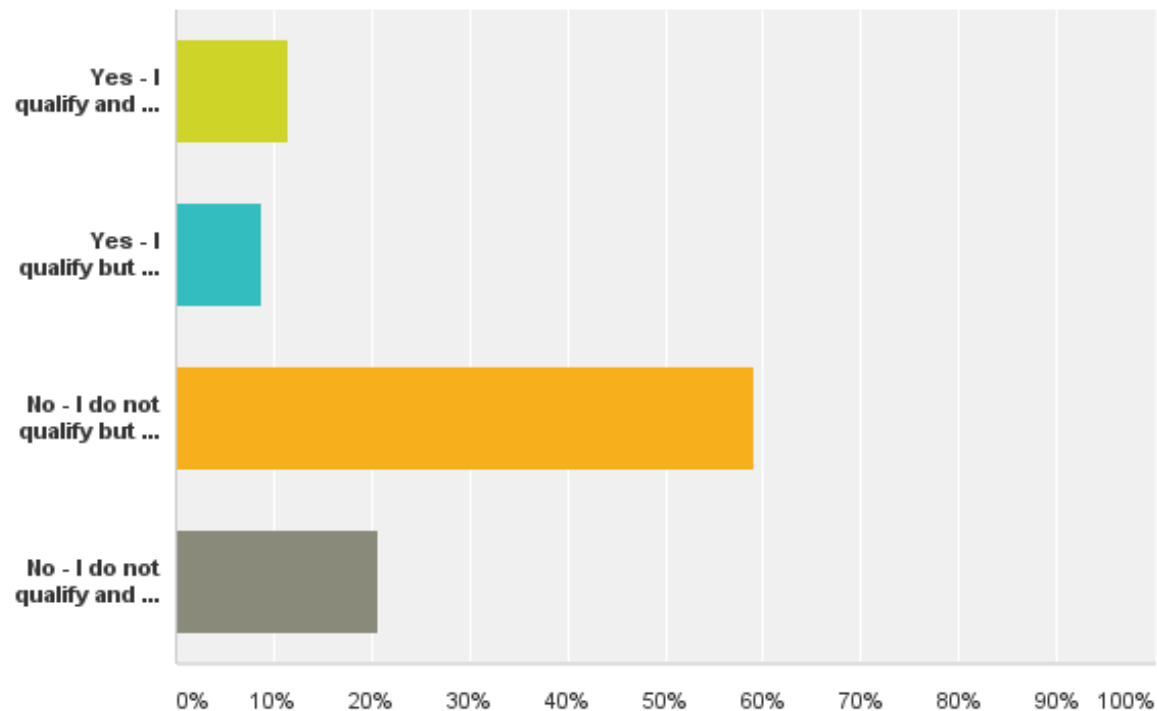
1. A person who is certified as a Certified Crop Advisor (CCA) by the American Society of Agronomy and is a member in good standing of the Ontario Certified Crop Advisor Association.
2. A person who is registered as a member under the *Ontario Institute of Professional Agrologists Act, 2013*, if the person’s field of practice relates to paragraph 2 or 6 of subsection 3 (2) of that Act.
3. A person who holds an authorizing certificate issued by an out-of-province regulatory authority in respect of a field of practice mentioned in paragraph 2.
4. A person who, in the opinion of the Director, has qualifications that are equivalent to those of a person mentioned in paragraph 1 or 2.

However, once phase-in starts in 2017

- Any CCA who works for a company that sells treated seed, sells products that are used to treat seed, or if they sell treated seed themselves, cannot do the pest assessments
- Exclusion covers approximately 80% of Ontario CCAs!
- CCAs captured in above exclusion can do assessments until the phase-in hits their county

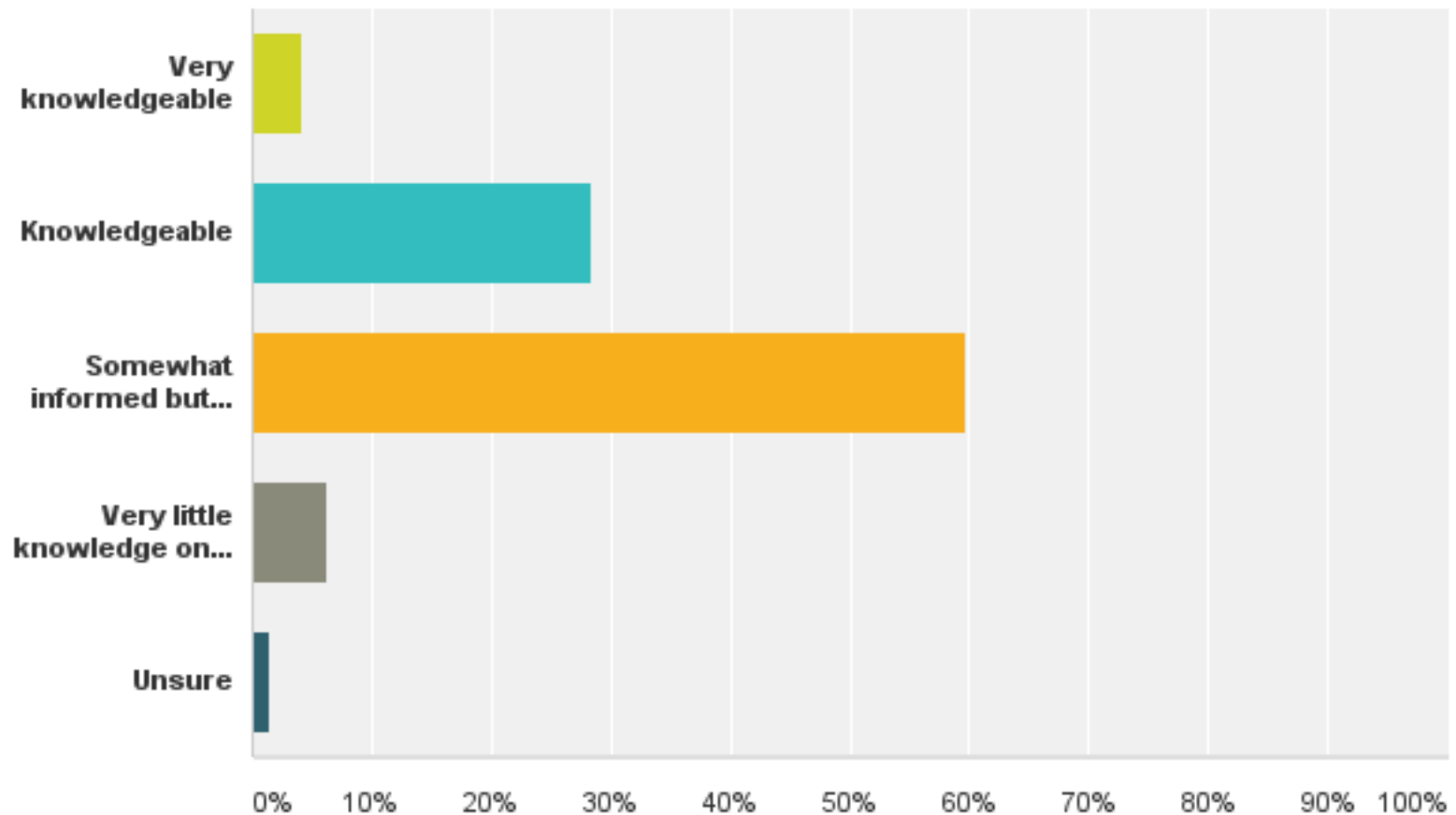
Q3 Any CCA who works for a company that sells treated seed, sells products that are used to treat seed, or if they sell treated seed themselves, will eventually not be able to do the pest assessments. The exclusion begins to be phased in across the province beginning in August 2017. Based on your current employment status, would you qualify to do pest assessments post-2017?

Answered: 193 Skipped: 2



Q1 How well informed do you feel regarding the new requirements for treated seed?

Answered: 194 Skipped: 1



What next?

- Continue to work through how this will be implemented
- Collaborate with industry partners
- Provide information to CCA members
- Comment from some CCAs that information on this issue is well worth cost of annual membership

Questions?